

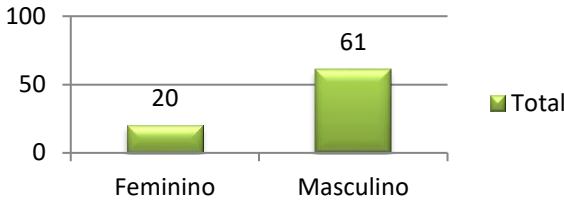
MONITORAMENTO ARUJÁ

ACIDENTE DE TRABALHO

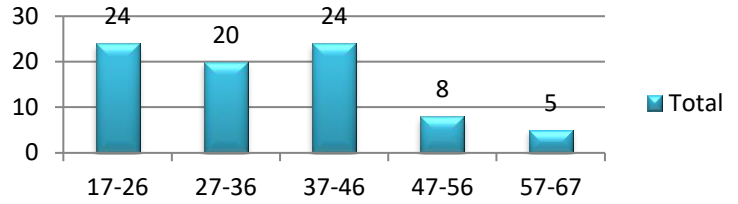
2º TRIMESTRE 2024

Casos	81
C.I. 100 hab.	0,81

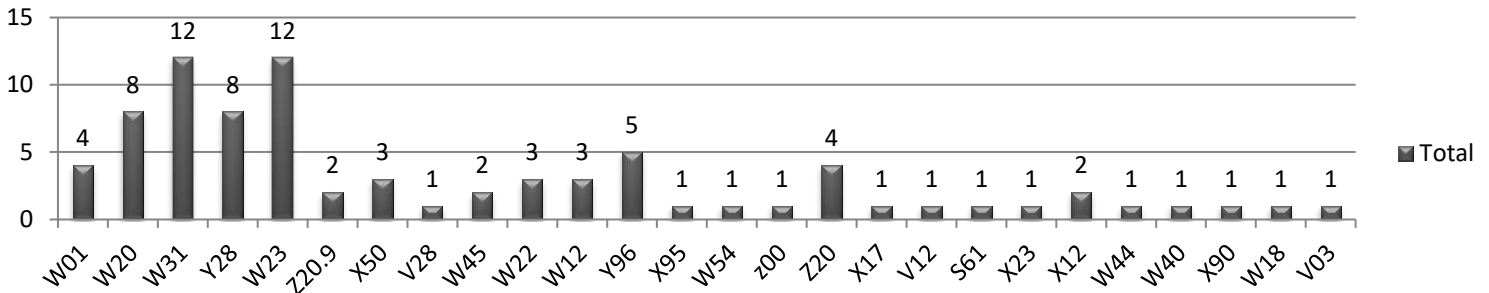
SEXO



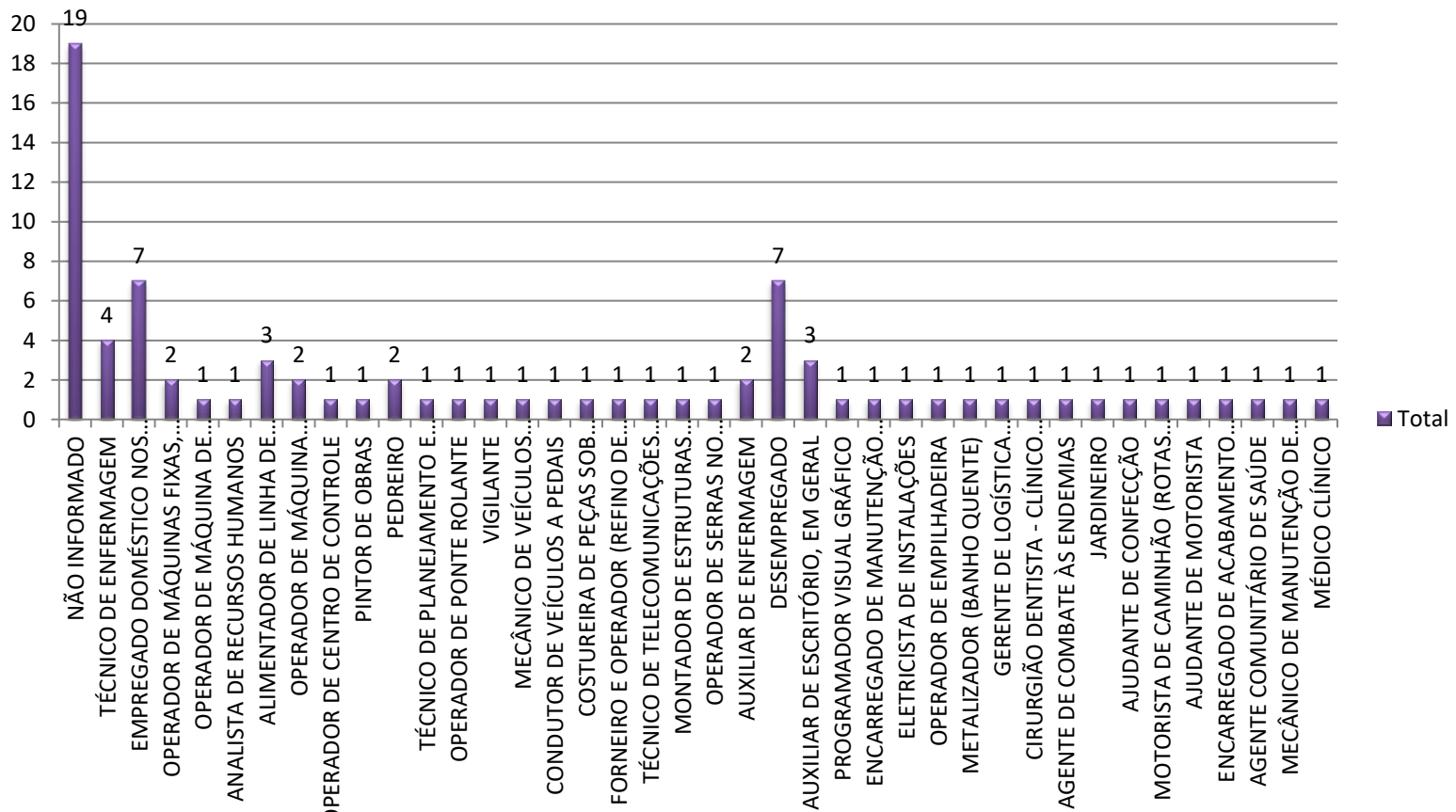
FAIXA ETÁRIA (Intervalo de 10 anos)



CAUSAS DE ACIDENTES MAIS FREQUENTES (CID-10)



OCUPAÇÕES MAIS FREQUENTES (CBO)



UNIDADE DE SAÚDE

